

Product Information

Antibody clonality: Polyclonal

Raised in: Rabbit

Purity: Serum

Quantity: 100 µl

Antibody form: Lyophilized. For reconstitution please add 100 µl of sterile water. Please, remember to spin tubes briefly prior to opening them to avoid any losses that might occur from liquid or lyophilized material adhering to the cap or sides of the tubes.

Storage instructions: -20°C or -80°C long Term storage (years). Please, avoid freezing and thawing of antibodies. Make aliquots instead.

Background

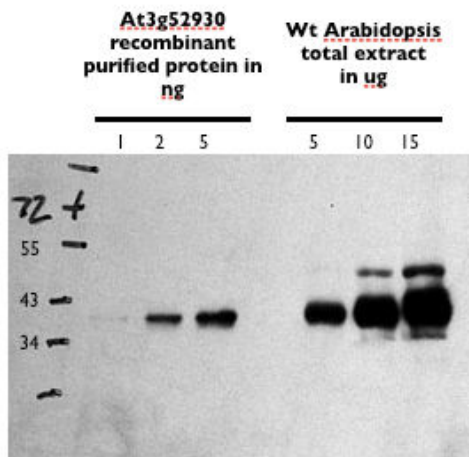
Fructose-1,6 bisphosphate aldolase (ALD) is an enzyme catalyzing a key reaction of glycolysis and energy production, converting D-fructose-1,6-bisphosphate into dihydroxyacetone phosphate and D-glyceraldehyde-3-phosphate. This enzyme is present in plant and animal tissues. Plant enzyme is a class I aldolase which does not require a bivalent metal cofactor. It is located to outer mitochondrial membrane.

Immunogen: Overexpressed cytosolic fructose 1,6 bisphosphate aldolase (ALD) based on the sequence from *Arabidopsis thaliana*. Gene accession number: At3g52930

Localization of aldolase: outer mitochondrial membrane. However, this enzyme can be released into cytosol during inhibited respiration.

Application information:

Western Blot: 1: 5 000 (ECL)



MW: 38 kDa

Reactivity: *Arabidopsis thaliana* (tested so far). No reactivity for *Synechocystis* sp.

Samples and marker were resolved on 8-17 % gradient SDS gels and blotted to nitrocellulose filters (Biorad) using buffers and conditions as described by the manufacturers. Filters were probed with serum diluted 1:5 000 and secondary HRP-conjugated antibody (1:10,000, Abcam) detected by ECL (Thermo Scientific) according to the recommendations of the manufacturers.

Image was acquired with 1 min exposure time on X-ray film (Kodak).

Antibodies are intended for the research use only not for diagnostic or therapeutic use.

Product support: inquiry@agrisera.com, <http://www.agrisera.com>

Mailing address: Box 57, S-911 21 Vännäs, Sweden

Phone/Fax: +46 (0)935 33033 / +46 (0)935 33044

Website: www.agrisera.com

International Bank Account Number (IBAN)

SE42 6000 0000 0001 15217258, S.W.I.F.T. address: HANDSEB

Bank: Svenska Handelsbanken, S-106 70 Stockholm, Sweden

VAT number: SE556263276901 (Tax identification number)